

# SPRINGFIELDS QUILT SHOW SPALDING 2017

Springfields Events Centre, Camelgate, Spalding, Lincs. PE12 6ET

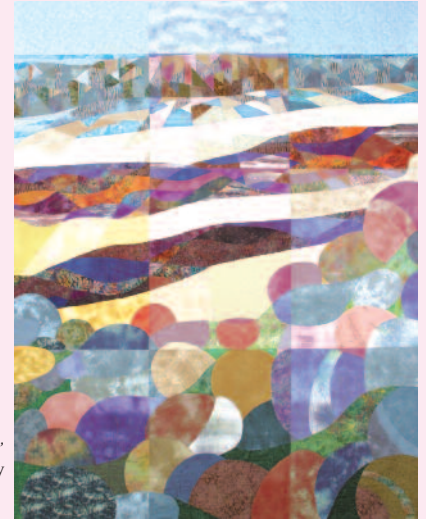
Friday 2nd - Saturday 3rd June 2017  
10am-4.30pm (4pm Saturday)



Find Us on Facebook  
[www.facebook.com/grosvenor](http://www.facebook.com/grosvenor)

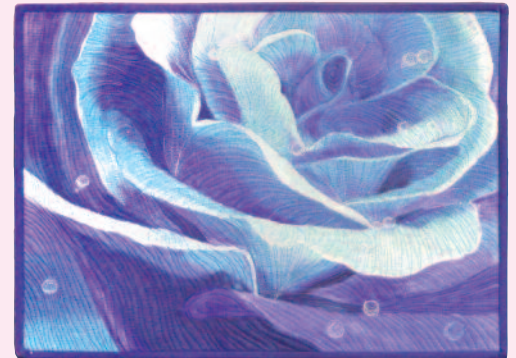
## FEATURE DISPLAYS

- \* HEBRIDEAN LANDSCAPES by Effie Galletly
- \* LET'S COLOUR THE WORLD by Brazilian Textile Artists
- \* WILD ATLANTIC WAY by Irish Patchwork Society
- \* PAISLEY RENAISSANCE by Sandie Lush
- \* QUILTING MY GUILTY PLEASURE by Diane Abram
- \* THE FABRIC & FIBRE OF NATURE by Karen Lane
- \* AN ONGOING JOURNEY by Annelize Littlefair
- \* MADE IN CORNWALL by Cornish Members of South West Quilters
- \* SOUTH WEST QUILTERS' CHALLENGE: UP, UP AND AWAY



All displays are subject to change

Right: 'Galson Beach' by Effie Galletly



Above: 'Dew' by Katia Laquila (Brazilian Textile Artist)



Left: 'Through the Window Brightly' by Meg Kenny (Irish Patchwork Soc.)



Left: 'Summer Garden' by Karen Lane

Right: 'The Breath of Life' by Natalia Manley



## Workshops Available

Participate in our numerous workshops by quilting experts. Telephone for a list or download from the website.

## Patchwork & Quilting Suppliers Stands

\* OPEN 10am-4.30pm (4pm Sat) \* FREE CAR PARKING \* DISABLED ACCESS \* RESTAURANT

**BUY YOUR TICKETS IN ADVANCE & SAVE MONEY! BOOK ON-LINE, BY POST OR BY PHONE\***

**Advance Tickets:** Adults £5.00, Senior Citizens £4.00, Children (8-16) £1.00

**On The Door:** Adults £6.00, Senior Citizens £5.00, Children (8-16) £2.00

ENQUIRIES: Grosvenor Shows Ltd, 282 High Road, Whaplode, Spalding, Lincolnshire PE12 6TG  
Tel: 01406 372600 & 01406 372601 Fax: 01406 372602 E-mail: [grosvenorshows@btconnect.com](mailto:grosvenorshows@btconnect.com)

Office Hours : Mon - Fri 9.00am - 5.00pm

Website: [www.grosvenorshows.co.uk](http://www.grosvenorshows.co.uk)

\*All card bookings are subject to a 50p booking fee

Deadline for advance ticket bookings: 19th May 2017